

# Riverview East Health Center



A partnership with  
CINCINNATI HEALTH DEPARTMENT   Health  
We know health matters

## Directory

## Health Center & Community Partners

### Riverview East Academy

3555 Kellogg Ave  
Cincinnati, OH 45226  
Main Office: (513) 363-3400

#### Charlene Meyers

*myersch@cpsboe.k12.oh.us*  
(513) 363-3400

#### Riverview East Academy, Principal

#### Erik Thomas

*Ethomas912.et@gmail.com*  
(513) 363-3414

#### Riverview East Resource Coordinator

Brings all partners (resources) together to align individual goals to the school's My Tomorrow Initiative. These goals include improved academic performance and post-graduation commitments.

### School-Based Health Center

Monday-Friday 9am-5pm  
(513) 363-3476

#### Kathy Frede, RN

*Kathy.frede@cincinnati-oh.gov*  
(513) 363-3421

#### Riverview East Academy Nurse



#### Jerry Friemoth, MD

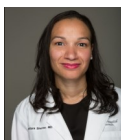
*Jerry.friemoth@uc.edu*  
(513) 363-3476

#### Health Center Physician

#### Kelly Loring, NP

*Kelly.Loring@cincinnati-oh.gov*  
(513) 363-3476

#### Health Center Nurse Practitioner



#### Anisa Shomo, MD

*drshomo@gmail.com*  
(513) 363-3476

#### Health Center Physician

#### Alisha Wakefield, MA

*Alisha.wakefield@cincinnati-oh.gov*  
(513) 363-3476

#### Provider Assistant



#### Angel White

*Angel.white@cincinnati-oh.gov*  
(513) 363-3476

#### Health Center Case Work Associate

Manages the health center day-to-day operations. Keeps Provider schedules and appointments for students and Community. I order all supplies and maintain the Consent Rate for the school, provide patient vitals, and manage immunizations.

# Riverview East Health Center



A partnership with  
   
We know **health** matters

## Directory

## Health Center & Community Partners

### Children's Home at Riverview East Academy



**John Brewer, MD**

*[jbrewer@thechildrenshomecinti.org](mailto:jbrewer@thechildrenshomecinti.org)*

**Pediatrician**



**Lisa Zito, LPC**

*[lzito@thechildrenshomecinti.org](mailto:lzito@thechildrenshomecinti.org)*

**Counselor**

**Cameron Gardner, LPC**

*[cgardner@thechildrenshomecinti.org](mailto:cgardner@thechildrenshomecinti.org)*

**Counselor**

### Cincinnati Health Department



**Marilyn Crumpton, MD, MPH**

*[Marilyn.crumpton@cincinnati-oh.gov](mailto:Marilyn.crumpton@cincinnati-oh.gov)*

**Medical Director of School &  
Adolescent Health**

**Lauren Thamann-Raines**

*[Lauren.thamann-raines@cincinnati-oh.gov](mailto:Lauren.thamann-raines@cincinnati-oh.gov)*

**Project Coordinator SBHC**

**Angie Hartman**

*[Angie.hartman@cincinnati-oh.gov](mailto:Angie.hartman@cincinnati-oh.gov)*

**Consultant SBHC**



**Barb Wiley-Kroner, BSN, RN**

*[Barb.wiley-kroner@cincinnati-oh.gov](mailto:Barb.wiley-kroner@cincinnati-oh.gov)*

**Acting Nursing Supervisor**

**Angela Robinson**

**Outreach Enrollment Coordinator**

**Natasha Kendricks**

**Enrollment Specialist SBHC**

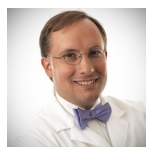
# Riverview East Health Center



A partnership with  
   
We know health matters

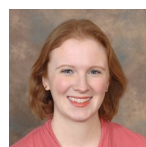
## Directory Health Center & Community Partners

### MedTAPP Partners



**Chris Bernheisel, MD**  
*Christopher.bernheisel@uc.edu*

**UC DFCM, Residency Director  
MedTAPP Co-Investigator**



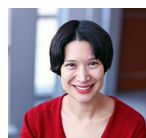
**Katy Cosse, MPH**  
*Kathryn.cosse@uc.edu*

**UC College of Nursing  
MedTAPP Program Coordinator**



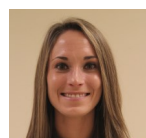
**Nancy Elder, MD**  
*Nancy.elder@uc.edu*

**UC DFCM Research Division Faculty  
MedTAPP Community Partnered Projects**



**Tanya Froehlich, MD, MS,  
FAAP**  
*Tanya.froehlich@cchmc.org*

**Cincinnati Children's Hospital and  
Medical Center  
Developmental Behavioral Pediatrics**



**Katie Fulton, MPH**  
*Kathleen.fulton@uc.edu*  
513-558-0207

**UC College of Nursing  
MedTAPP Program Coordinator**



**Daniel Hargraves, MSW**  
*Daniel.hargraves@uc.edu*  
513-558-6222

**UC DFCM Research Assistant  
MedTAPP Program Manager**



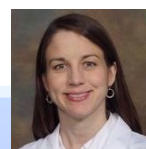
**Joe Kiesler, MD**  
*Joseph.kiesler@uc.edu*

**UC DFCM, Underserved Health and  
Global Health Director  
MedTAPP DFCM Principal Investigator**



**Diana McIntosh, PhD,  
APRN, PMHNP-BC**  
*Diana.mcintosh@uc.edu*

**UC College of Nursing Advanced  
NP, Psychiatry**



**Hillary Mount, MD**  
*Hillary.mount@uc.edu*

**UC DFCM, Assistant Professor**

# Riverview East Health Center



A partnership with  
   
We know **health** matters

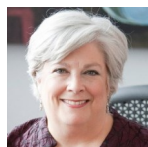
## Directory

## Health Center & Community Partners



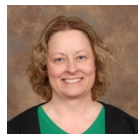
**Christy O'Dea, MD**  
*odeacj@ucmail.uc.edu*

**UC DFCM, Assistant Professor**



**Suzanne Perraud, PhD,  
PMHCNS-BC**  
*perrause@ucmail.uc.edu*

**UC College of Nursing, Sr. Associate Dean  
MedTAPP PI**



**Soni Regan, PhD**  
*Saundra.regan@uc.edu*

**UC DFCM,  
Associate Research Division Director  
MedTAPP Evaluator**



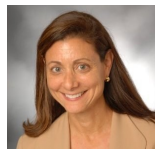
**Suzanne Sampang, MD**  
*sampansj@ucmail.uc.edu*

**Cincinnati Children's Hospital and  
Medical Center**



**Michael Sorter, MD**  
*Michael.sorter@cchmc.org*

**Cincinnati Children's Hospital and  
Medical Center**



**Barb Tobias, MD**  
*Barbara.tobias@uc.edu*

**UC DFCM, Vice Chair,  
MedTAPP Co-PI**



**Chris White, MD, JD, MHA**  
*Christopher.white@uc.edu*

**UC DFCM Research Division Director  
MedTAPP Effective Communication Curriculum**



**Francie Wolgin**  
*fwolgin@interactforhealth.org*

**Interact for Health  
Senior Program Officer, School-Aged  
Children's Health**