

Guatemala

2015 population

16.4M

Source: IHME estimate

2015 per capita GDP

\$6,215

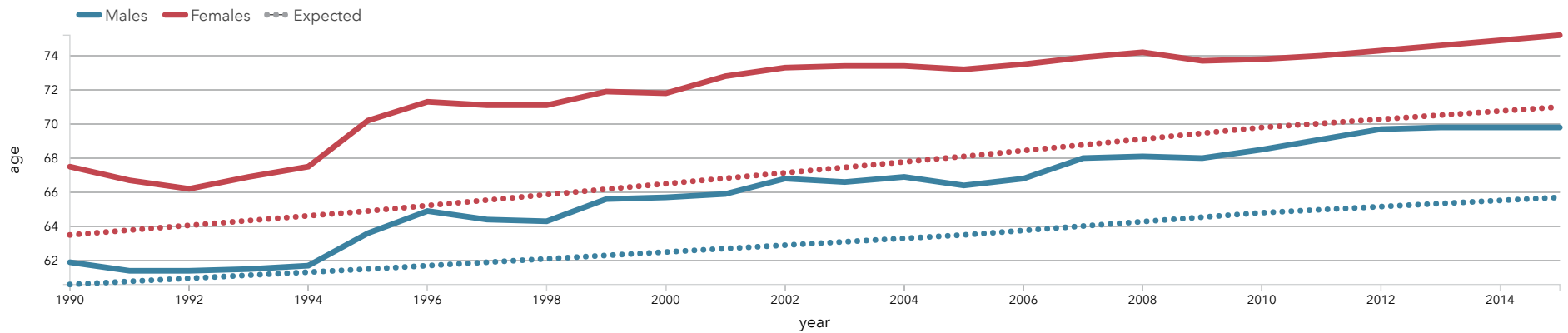
Source: IHME estimate; unit is 2010 PPP

2015 death rate per 100k

514.6

Source: IHME estimate

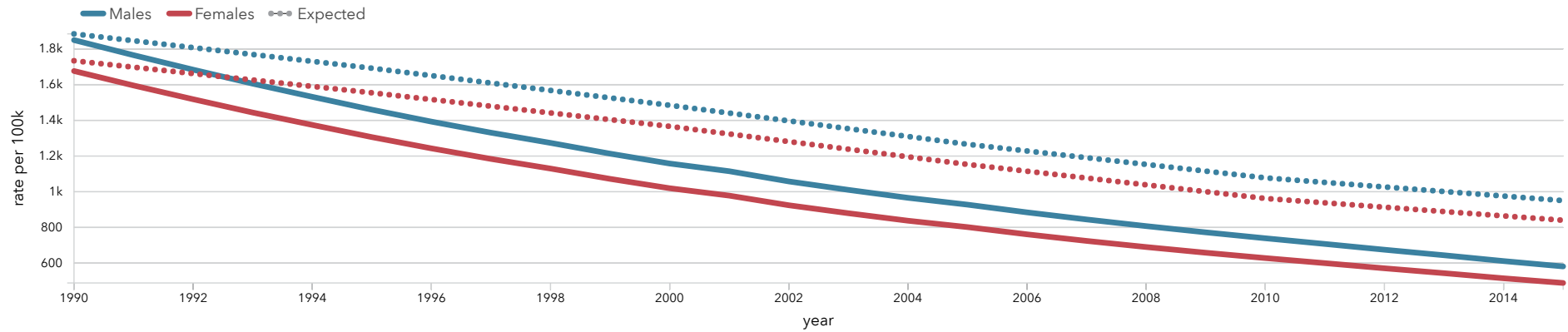
How long do people live?



	Expected		Observed	
	1990	2015	1990	2015
Males	60.6	65.7	61.9	69.8
Females	63.5	71.0	67.5	75.2

Life expectancy, 1990-2015

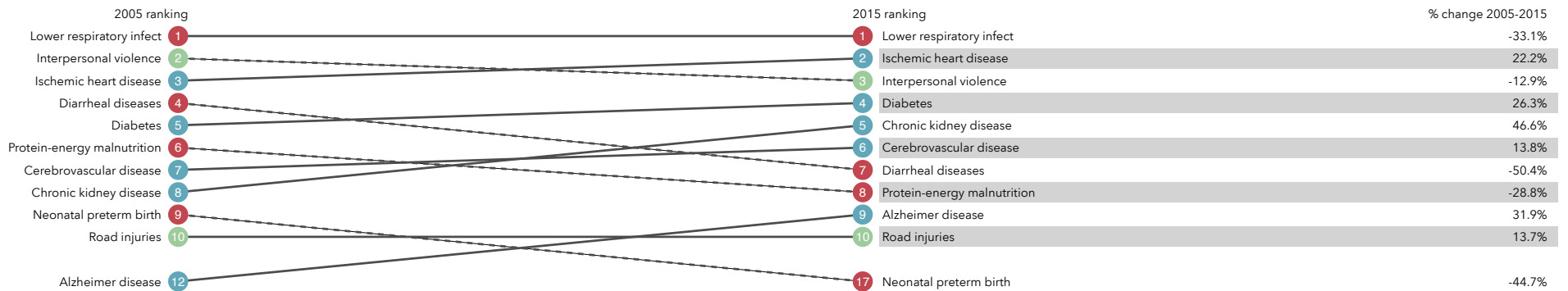
At what rate do children under 5 die?



	Expected		Observed	
	1990	2015	1990	2015
Males	1.9k	950.6	1.8k	582.1
Females	1.7k	840.5	1.7k	489.6

All cause under 5 mortality rate, 1990-2015

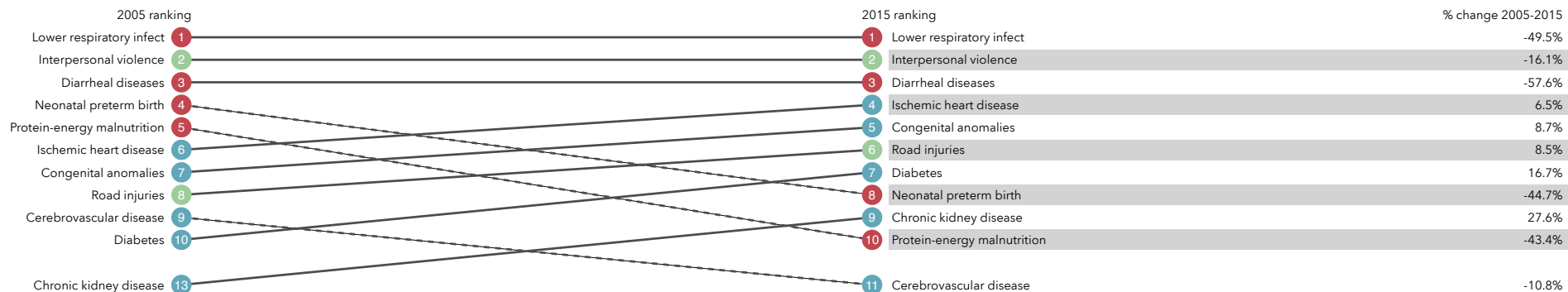
What causes the most deaths?



Top 10 causes of death by rate in 2015 and percent change, 2005-2015

What causes the most premature death?

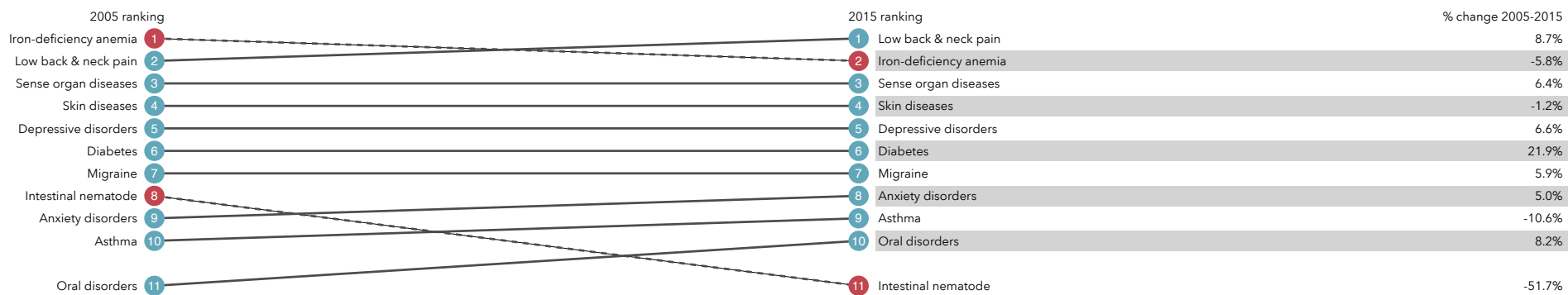
- Communicable, maternal, neonatal, and nutritional diseases
- Non-communicable diseases
- Injuries



Leading causes of premature death (YLLs) in 2015 and percent change, 2005-2015

What health problems cause the most disability?

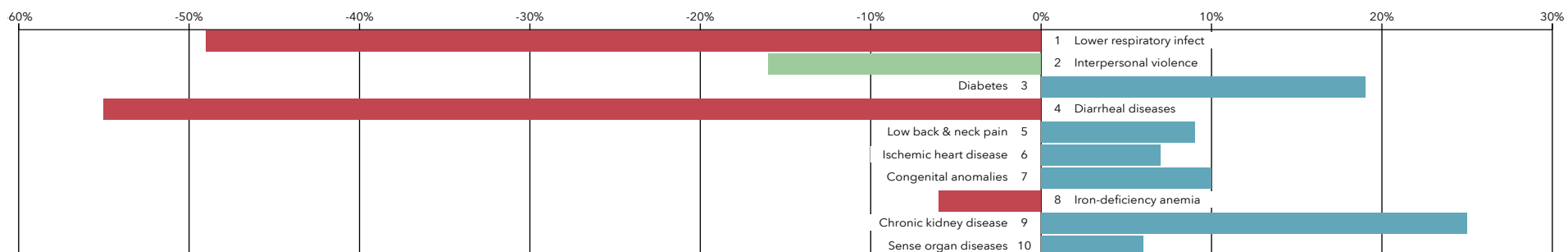
- Communicable, maternal, neonatal, and nutritional diseases
- Non-communicable diseases
- Injuries



Leading causes of YLDs in 2015 and percent change, 2005-2015

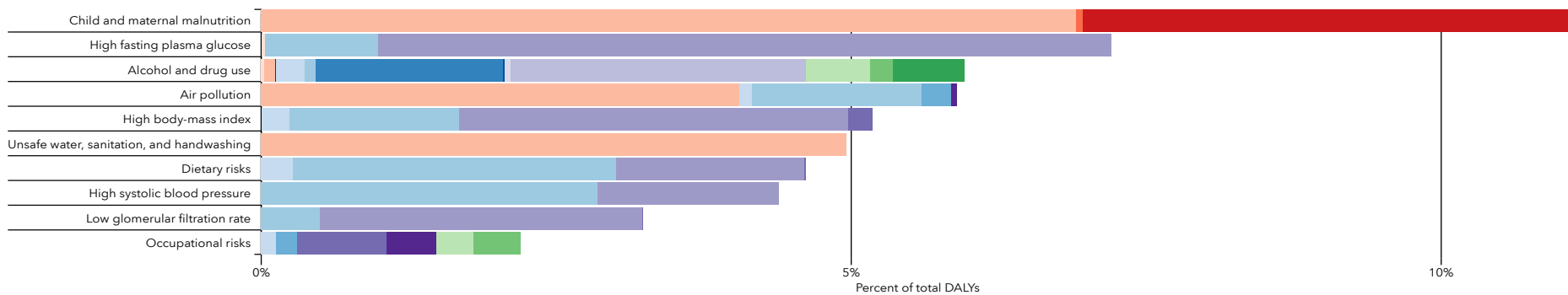
What causes the most death and disability combined?

- Communicable, maternal, neonatal, and nutritional diseases
- Non-communicable diseases
- Injuries



Leading causes of DALYs in 2015 and percent change, 2005-2015

What risk factors drive the most death and disability combined?

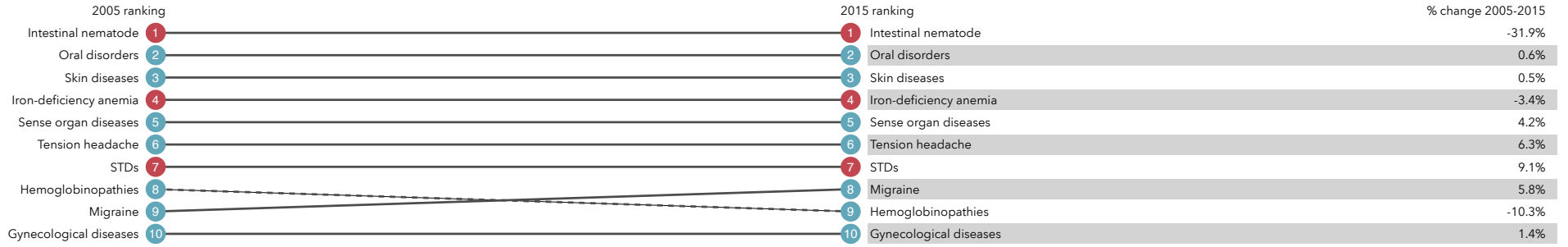


- HIV/AIDS and tuberculosis
- Cardiovascular diseases
- Diabetes, urogenital, blood, and endocrine diseases
- Diarrhea, lower respiratory, and other common infectious diseases
- Chronic respiratory diseases
- Musculoskeletal disorders
- Maternal disorders
- Cirrhosis and other chronic liver diseases
- Other non-communicable diseases
- Nutritional deficiencies
- Digestive diseases
- Transport injuries
- Other communicable, maternal, neonatal, and nutritional diseases
- Neurological disorders
- Unintentional injuries
- Neoplasms
- Mental and substance use disorders
- Self-harm and interpersonal violence

Top 10 causes of DALYs with key risk factors, 2015

What health problems are becoming more or less prevalent?

- Communicable, maternal, neonatal, and nutritional diseases
- Non-communicable diseases
- Injuries



Most prevalent causes (new and existing cases) and percent change, 2005-2015